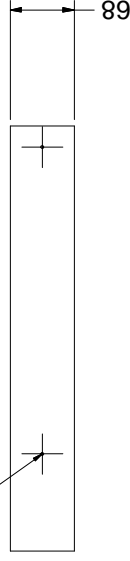
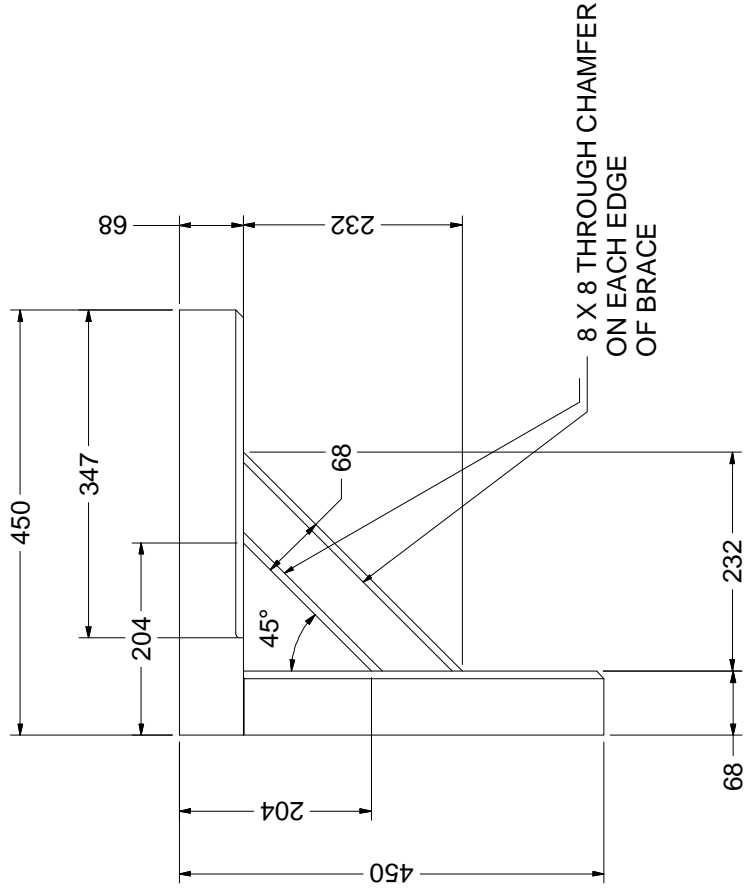


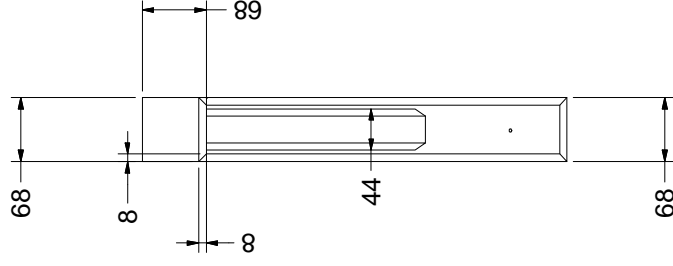
HOLES DRILLED -  
ON ASSEMBLY



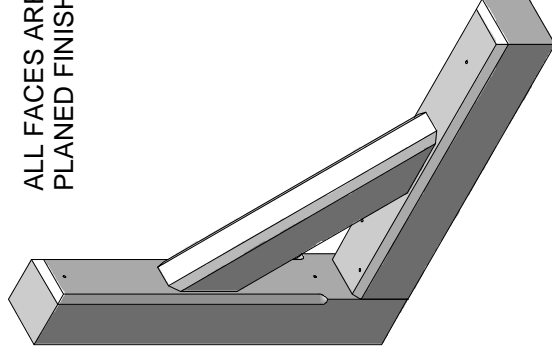
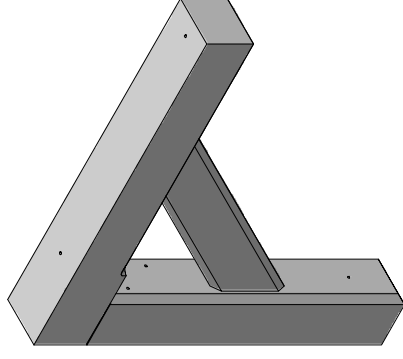
HOLES DRILLED -  
ON ASSEMBLY



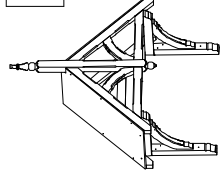
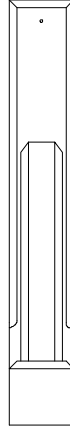
— 8 X 8 THROUGH CHAMFER  
ON EACH EDGE  
OF BRACE



ALL FACES ARE  
PLANED FINISH



SWL (Safe Working Load) = 111 Kg



**TITLE** GALLOWS BRACKET FG10

<b>Canopy Products Ltd</b> <b>Blackwood Mill</b> <b>Blackwood Road</b> <b>Bacup, Lancs, OL15 0PZ</b> <b>Tel 01706 82 2665</b> <b>Fax 01706 82 3333</b>	MATERIAL	EUROPEAN RED DEAL V		
	TREATMENT	DIP TREATED WITH GLASSURIT GLASSOHYD NATURA BASE COAT FUNGGICIDE STAIN		
	SCALE	DRN	DATE	
	DRG. No.		R. SPENCER	
			24/06/2008	
<b>FG10</b>				

HEAD AND UPRIGHT- EX 75mm X 75mm  
BRACE - EX 75mm X 50mm